



Imaging Perspective GE Healthcare

Jan Wolber

EFPIA Annual Meeting, 5 June 2015

Imagination at work.

GE Healthcare

\$17 Bn global business unit of GE

53,000 employees worldwide

\$1 Bn annual investment in R&D

Core strengths in biomedical sciences, technology & business



Serving healthcare systems •
hospitals • clinics •
governments •
pharmaceutical &
biopharmaceutical industries
• genetics & bio-science
researchers • academia



GE Healthcare Life Sciences

Accelerating precision medicine with tools for biotechnology R&D, biopharma manufacturing, cell therapy & regenerative medicine, diagnostic imaging, molecular & precision diagnostics



**Research
& Applied
Markets**



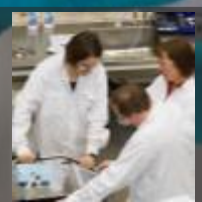
BioProcess



**In Vitro
Diagnostics**



**Core
Imaging**



Services

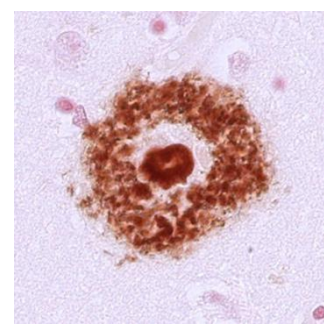
Five product business units • 10 000 people • 100+ countries • UK HQ
Manufacturing, research & development in US, Europe and Asia

β -Amyloid PET Imaging in Dementia: The Need for an Innovation Ecosystem

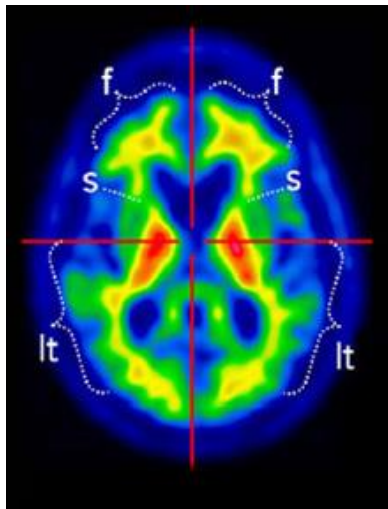


VIZAMYL™: β -Amyloid PET Imaging Agent

A β PET imaging indicates A β neuritic plaque density

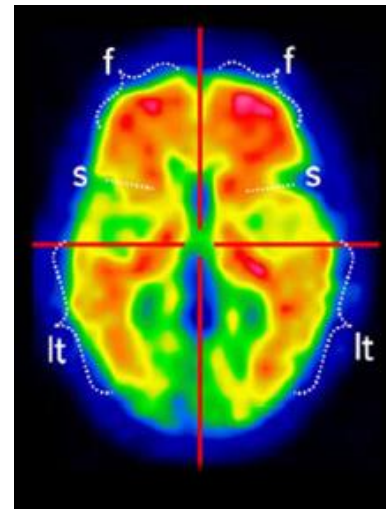


Negative Scan¹



- None or sparse plaque deposition
- Decreases AD likelihood
- Inconsistent with diagnosis of AD

Positive Scan¹⁻²



- Moderate or frequent plaque deposition
- May be present in other neurological conditions
- May be present in older people with normal cognition
- Is an adjunct to clinical evaluations

1. Vizamyl® [package insert]. Arlington Heights, IL: GE Healthcare, Medi-Physics, Inc; 2013.

2. Bacskai BJ, et al. *Arch Neurol*. 2007;64(3):431-434.

CHMP VIZAMYL opinion/EMA press release

“The benefits with Vizamyl are its ability to help detect with a high accuracy the beta-amyloid deposition, and therefore contribute valuable additional information in the diagnostic process in Alzheimer’s disease.”

β -Amyloid PET Imaging – The Challenges

Individual stakeholders have different needs

Regulatory authorities

Require evidence to support patient management and diagnostic workflow

GE Healthcare

- Need to demonstrate utility of β -amyloid PET imaging
- Difficult to gain reimbursement without disease-modifying treatments

Pharmaceutical industry

- Are developing drugs targeting β -amyloid
- Need to stratify populations
- Need outcome measures
- Looking for suitable biomarkers

Payers

Need to see added value of PET imaging; looking for health-economic benefits

Other β -amyloid PET providers

Similar needs to GEHC

Clinicians

- Have medical need for unequivocal diagnosis
- Seeking to improve patient outcomes

Academia

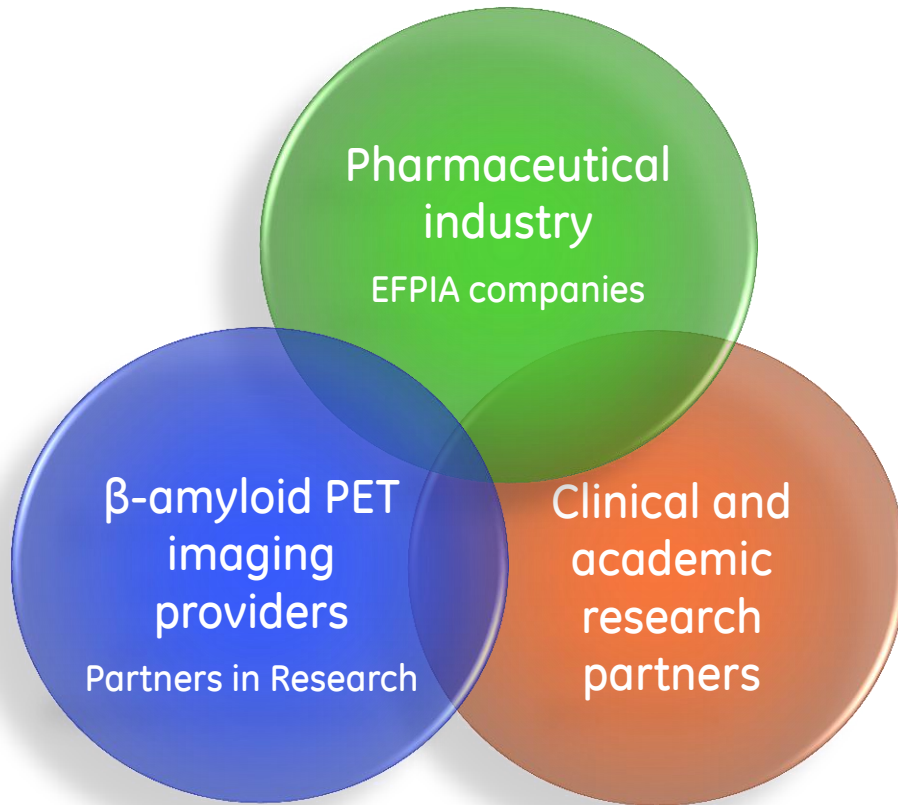
- Conducting clinical research
- Seeking access to imaging agents
- Developing other biomarkers

Stakeholders need each other; impossible to create a win-win situation alone



Establishing Utility of β -Amyloid PET Imaging

Vision of an integrated approach



Synergistic value proposition :

- Joined-up approach between EFPIA companies, Partners in Research and other collaborators
- Addressing cross-industry needs (consortium of several EFPIA and PiR entities)
- Potential for therapeutic & diagnostic co-development
- Economies of scale
- Enabling synergies with existing programmes (e.g. clinical cohorts)
- Potential for joint interactions with regulators and payers

Integration of imaging component through 'Partners in Research' mechanism



